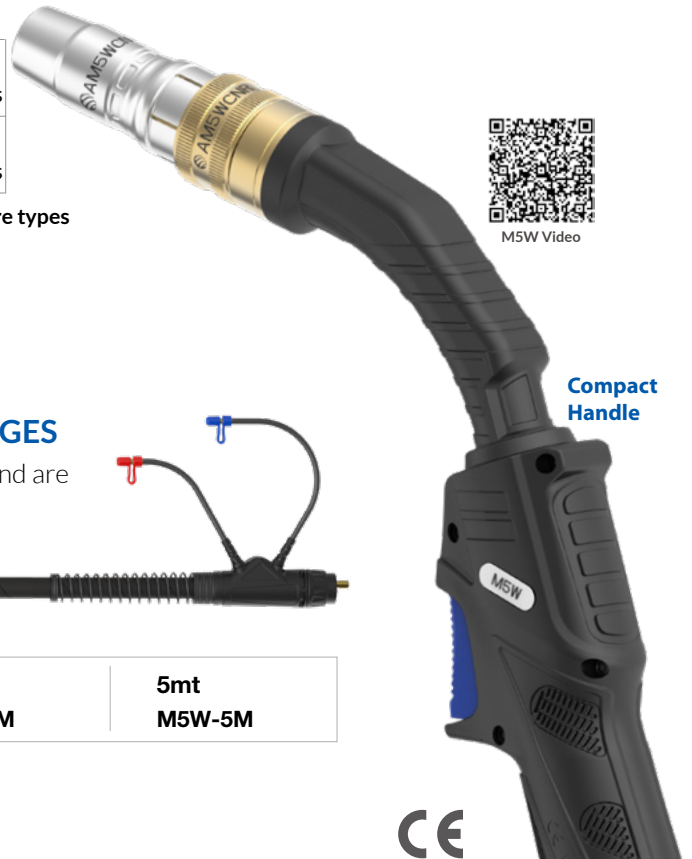


# M5W <sup>New</sup> Liquid-Cooled Mig Welding Torch

Ratings:	560A CO <sub>2</sub> , 540A mixed gas M21, 380A pulse @100% Max. Load 24KW with 1600W liquid cooler, 0.9mm-1.6mm wires
	540A CO <sub>2</sub> , 520A mixed gas M21, 350A pulse @100% Max. Load 22KW with 1200W liquid cooler, 0.9mm-1.6mm wires

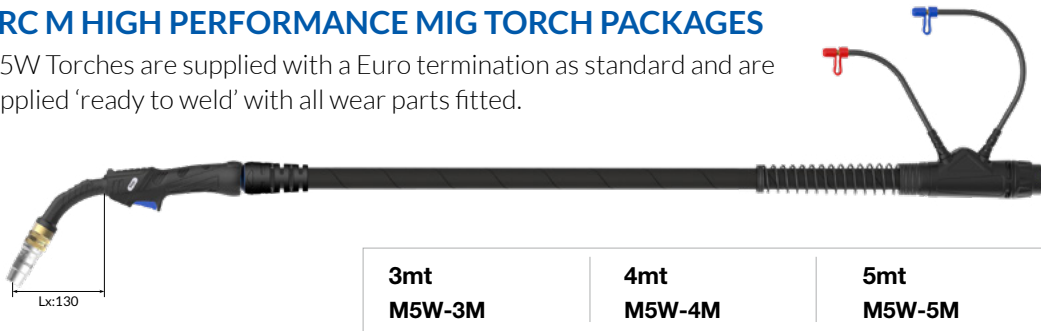


Ideal for heavy duty 1.2mm high deposition and pulse applications with all wire types



## ARC M HIGH PERFORMANCE MIG TORCH PACKAGES

M5W Torches are supplied with a Euro termination as standard and are supplied 'ready to weld' with all wear parts fitted.



## Wear Parts

### Nozzles

Part Number	Description	Bore	Wall	Material
A • AM5WCN	Conical / Insulator Only	13.5mm	3.0mm	Copper
AM5WCNHD	Conical / HD Insulator Only	13.5mm	3.0mm	Copper
AM5WTN	Tapered / Insulator Only	11.5mm	3.0mm	Copper
AM5WCYN	Cylindrical / Insulator Only	16.0mm	3.0mm	Copper
NS • AM5WCN-C	Conical Nozzle Complete			
AM5WCNHD-C	Conical Nozzle / HD Insulator Complete			
AM5WTN-C	Tapered Nozzle Complete			
AM5WCYN-C	Cylindrical Nozzle Complete			

### B Nozzle Retaining Rings

Part Number	Description	Size	Material
•AM5WCNR	Nozzle Retaining Ring	29.5mm	Brass

### C Contact Tips

Part Number	Description	Size (mm)	Wire Size (mm-inch)	Material
<b>Standard Series</b>				
AM5CT09	Contact Tip	M8*29.5	0.9 - 0.035"	CuCrZr
AM5CT10	Contact Tip	M8*29.5	1.0 - 0.040"	CuCrZr
•AM5CT12	Contact Tip	M8*29.5	1.2 - 0.045"	CuCrZr
AM5CT14	Contact Tip	M8*29.5	1.4 - 0.055"	CuCrZr
AM5CT16	Contact Tip	M8*29.5	1.6 - 0.063"	CuCrZr
<b>A Series</b>				
AM5CT10A	Contact Tip	M8*29.5	1.0 - 0.040"	CuCrZr
AM5CT12A	Contact Tip	M8*29.5	1.2 - 0.045"	CuCrZr
AM5CT16A	Contact Tip	M8*29.5	1.6 - 0.063"	CuCrZr

• Denotes torch package standard wear part set-up

### D Tip Adaptors

Part Number	Description	Material
•AM5WTAC-20	High Performance 2.0mm Recess	Copper
AM5WTAB-20	Tip Adaptor 2.0mm Recess	Brass

### E Tip Adaptor Insulators

Part Number	Description
•AM5WTAI	Tip Adaptor Insulator

### F Liners

Part Number	Description	Wire Size
•AM6SL-1012-30	Steel Liner x 3mt	1.0-1.2mm
•AM6SL-1012-40	Steel Liner x 4mt	1.0-1.2mm
•AM6SL-1012-50	Steel Liner x 5mt	1.0-1.2mm
AM6SL-16-30	Steel Liner x 3mt	1.6mm
AM6SL-16-40	Steel Liner x 4mt	1.6mm
AM6SL-16-50	Steel Liner x 5mt	1.6mm
AM6OSWL-1012-30	Soft Wire Liner x 3mt	1.0-1.2mm
AM6OSWL-1012-40	Soft Wire Liner x 4mt	1.0-1.2mm
AM6OSWL-1620-30	Soft Wire Liner x 3mt	1.6-2.0mm
AM6OSWL-1620-40	Soft Wire Liner x 4mt	1.6-2.0mm

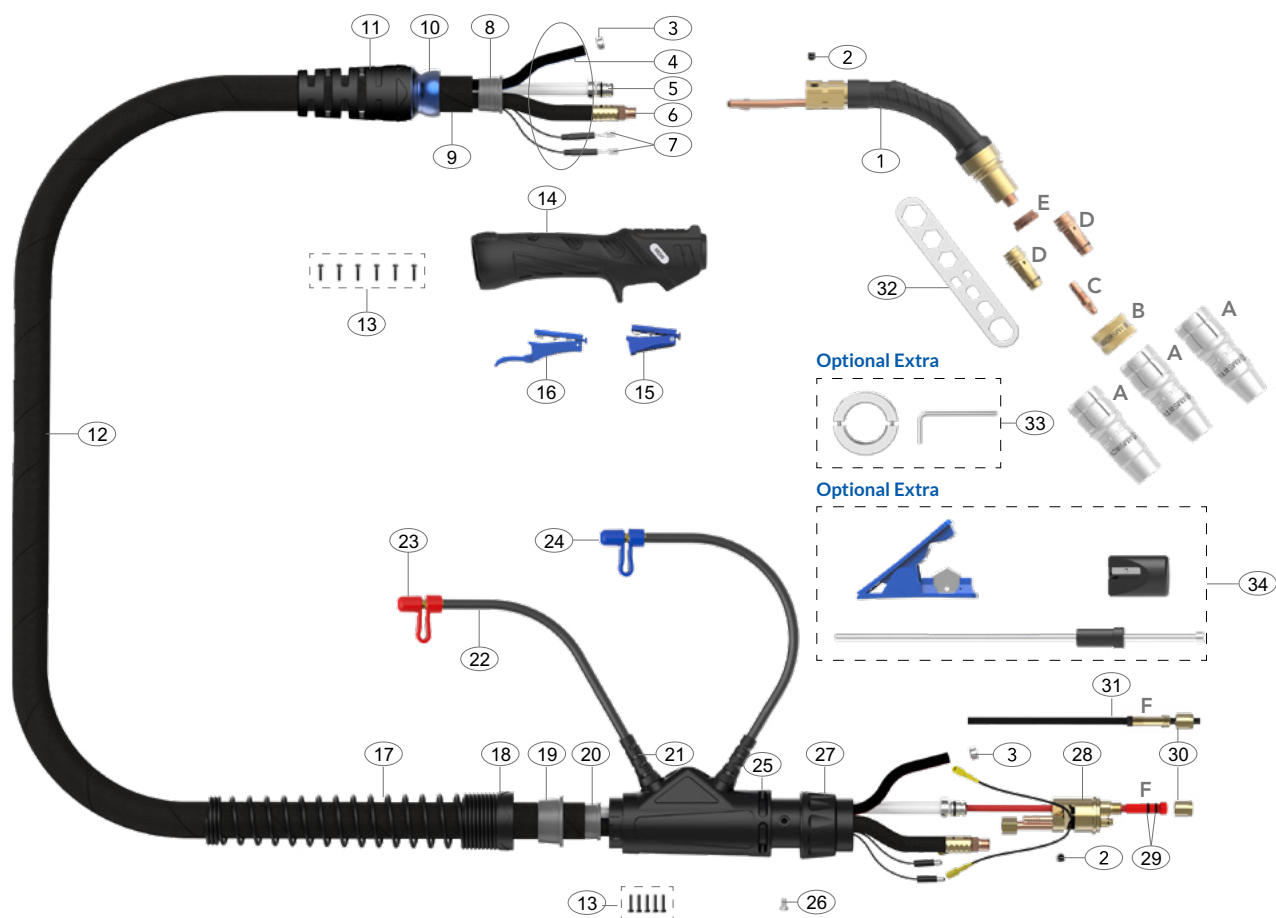
For alternate liner options please refer to page 38-39

NS: Denotes Now Shown

# HIGH PERFORMANCE SERIES



MAKE WORK  
LIFE EASIER



## Spare Parts

Part Number	Description
1	AM5002 Swan Neck Assembly
2	AM6X6 Outer Liner Retaining Screw
3	AM15400023 Water Hose Clamp 10mm
8	AMS8010 Canvas Cover Retainer
10	AMS3208-1 Ball Joint
11	AMS3208-S Cable Support With Nut
13	AMSP1-1 Screw Pack
14	AM2514 Handle Kit
15	AM2516 Microswitch Standard Trigger
16	AM2516L Microswitch Extended Trigger
17	AM8027 Cable Support Spring
18	AM8028 Housing Lock Nut
19	AM8009 Canvas Cover Clamp
20	AM8010 Canvas Cover Retainer
21	AM1820 Hose Support
22	AM5017 Water Outlet Hose Assembly
23	AM80320 Red Cap Stopper
24	AM80310 Blue Cap Stopper
25	AM5022 Housing Assembly
26	AM1526 Gun Plug Screw (M4 x 0.7)
27	AM1519 Gun Plug Nut
28	AM5098 Water-Cooled Plug Body Assembly
29	AMLOR Liner 'O' Ring
30	AM1826 Liner Retaining Nut
31	AMOSWLG Soft Wire Liner Gasket

Part Number	Description
32	AMWS Wear Parts Spanner
33	M6OSWN-DT Nozzle Ring Disassembly Tool
34	AMOSW-LINER-T Soft Wire / Combi-Liner Set-up Kit

## Cable Parts

Description	Part Number			
	3mt	4mt	5mt	
4	Water Inlet Hose Assembly	AM5012-30	AM5012-40	AM5012-50
5	Outer Liner Assembly	AM6008-30	AM6008-40	AM6008-50
6	Power Cable Assembly	AM6015-30	AM6015-40	AM6015-50
7	Switch Lead Assembly	AM5010-30	AM5010-40	AM5010-50
9	Canvas Cover Assembly	AM5019-30	AM5019-40	AM5019-50
12	Complete Cable Assembly	AM5506-30	AM5506-40	AM5506-50

### Welding with Soft Wires

For welding with Aluminum wires use a Soft Wire / Combi-Liner (page 39). Optimum installation is achieved when using the Soft Wire / Combi-Liner set-up kit.



Liner Set-up Guide

Always follow the correct liner installation procedure