

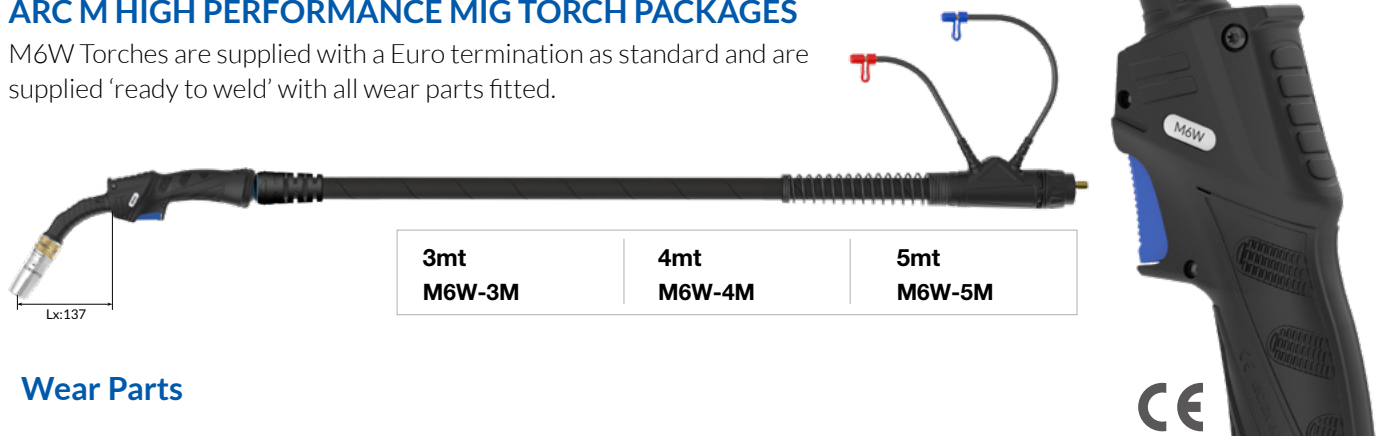
# M6W Liquid-Cooled Mig Welding Torch

Ratings:	580A CO <sub>2</sub> , 560A mixed gas M21, 400A pulse @100% Max. Load 25KW with 1600W liquid cooler, 0.9mm-2.0mm wires
	550A CO <sub>2</sub> , 520A mixed gas M21, 360A pulse @100% Max. Load 23KW with 1200W liquid cooler, 0.9mm-2.0mm wires

Ideal for heavy duty steel and high deposition applications

## ARC M HIGH PERFORMANCE MIG TORCH PACKAGES

M6W Torches are supplied with a Euro termination as standard and are supplied 'ready to weld' with all wear parts fitted.



<b>3mt</b> <b>M6W-3M</b>	<b>4mt</b> <b>M6W-4M</b>	<b>5mt</b> <b>M6W-5M</b>
-----------------------------	-----------------------------	-----------------------------

### Wear Parts

#### A Nozzles

Part Number	Description	Bore	Wall	Material
•AM6WCN	Conical / Insulator Assy	16mm	2.5mm	Copper
AM6WTN	Tapered / Insulator Assy	14mm	2.5mm	Copper

#### B Nozzle Retaining Rings

Part Number	Description	Size	Material
•AM6WCNR	Nozzle Retaining Ring	30.5mm	Brass

#### C Contact Tips

Part Number	Description	Size (mm)	Wire Size (mm-inch)	Material
<b>Standard Series</b>				
AM6WCT09	Contact Tip	M10*35.5	0.9 - 0.035"	CuCrZr
AM6WCT10	Contact Tip	M10*35.5	1.0 - 0.040"	CuCrZr
•AM6WCT12	Contact Tip	M10*35.5	1.2 - 0.045"	CuCrZr
AM6WCT14	Contact Tip	M10*35.5	1.4 - 0.055"	CuCrZr
AM6WCT16	Contact Tip	M10*35.5	1.6 - 0.063"	CuCrZr
AM6WCT20	Contact Tip	M10*35.5	2.0 - 0.080"	CuCrZr
<b>A Series</b>				
AM6WCT10A	Contact Tip	M10*35.5	1.0 - 0.040"	CuCrZr
AM6WCT12A	Contact Tip	M10*35.5	1.2 - 0.045"	CuCrZr
AM6WCT16A	Contact Tip	M10*35.5	1.6 - 0.063"	CuCrZr
AM6WCT20A	Contact Tip	M10*35.5	2.0 - 0.080"	CuCrZr

•Denotes torch package standard wear part set-up

#### D Tip Adaptors

Part Number	Description	Material
AM6WTAC-20	High Performance 2.0mm Recess	Copper
•AM6WTAC-45	High Performance 4.5mm Recess	Copper
AM6WTAB-20	Tip Adaptor 2.0mm Recess	Brass
AM6WTAB-45	Tip Adaptor 4.5mm Recess	Brass

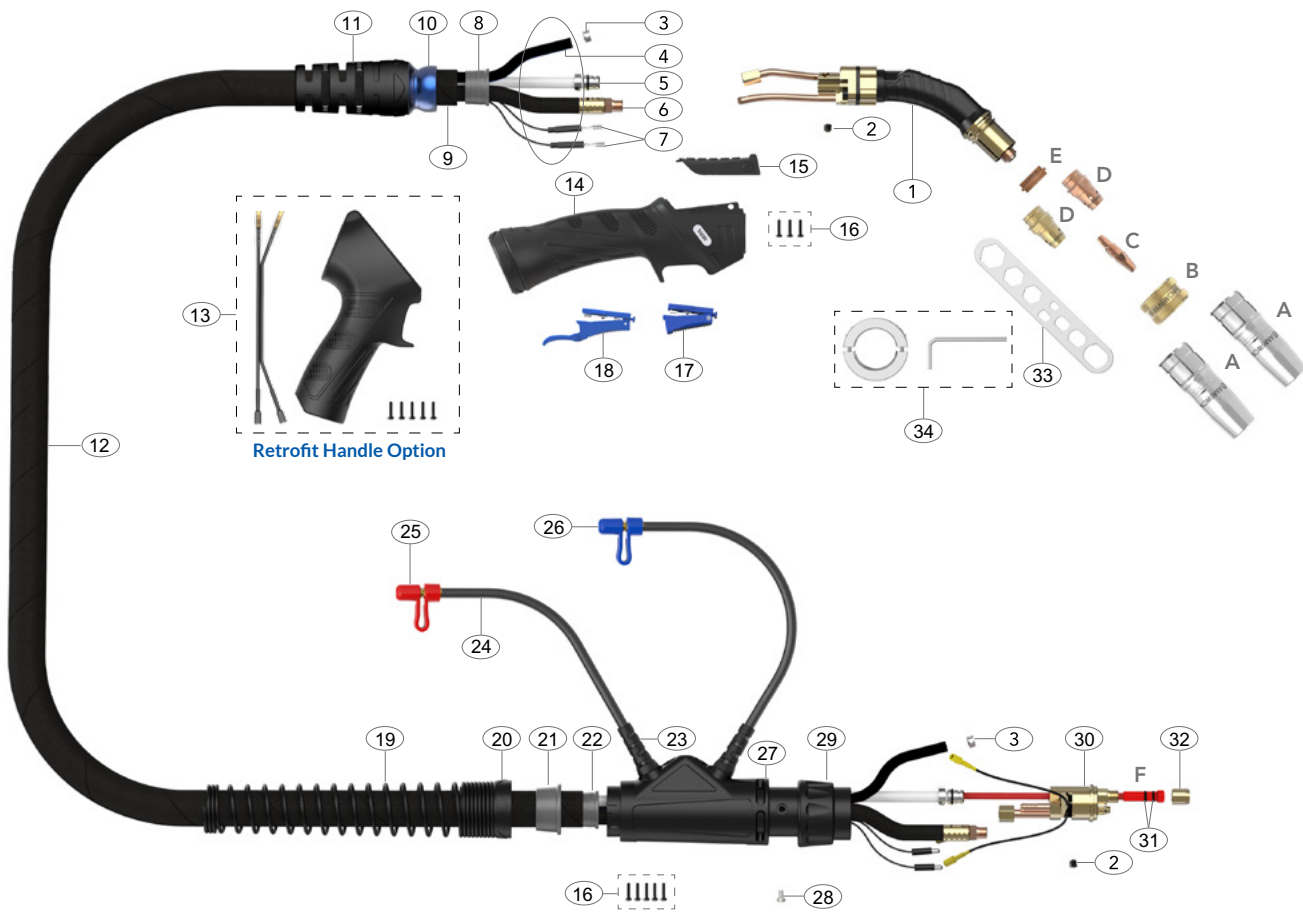
#### E Tip Adaptor Insulators

Part Number	Description
•AM6WTAI	Tip Adaptor Insulator

#### F Liners

Part Number	Description	Wire Size
•AM6SL-1012-30	Steel Liner x 3mt	1.0-1.2mm
•AM6SL-1012-40	Steel Liner x 4mt	1.0-1.2mm
•AM6SL-1012-50	Steel Liner x 5mt	1.0-1.2mm
AM6SL-16-30	Steel Liner x 3mt	1.6mm
AM6SL-16-40	Steel Liner x 4mt	1.6mm
AM6SL-16-50	Steel Liner x 5mt	1.6mm
AM6SL-20-30	Steel Liner x 3mt	2.0mm
AM6SL-20-40	Steel Liner x 4mt	2.0mm
AM6SL-20-50	Steel Liner x 5mt	2.0mm

For alternate liner options please refer to page 38-39



## Spare Parts

Part Number	Description
1	AM6002 Swan Neck Assembly
2	AM6X6 Outer Liner Retaining Screw
3	AM15400023 Water Hose Clamp 10mm
8	AMS8010 Canvas Cover Retainer
10	AM3208-1 Ball Joint
11	AMS3208-S Cable Support With Nut
14	AM2515 Handle and Lock Nut Assembly
15	AM2515-C Handle Control Cover
16	AMSP1-1 Screw Pack
17	AM2516 Microswitch Standard Trigger
18	AM2516L Microswitch Extended Trigger
19	AM8027 Cable Support Spring
20	AM8028 Housing Lock Nut
21	AM8009 Canvas Cover Clamp
22	AM8010 Canvas Cover Retainer
23	AM1820 Hose Support
24	AM5017 Water Outlet Hose Assembly
25	AM80320 Red Cap Stopper
26	AM80310 Blue Cap Stopper
27	AM5022 Housing Assembly
28	AM1526 Gun Plug Screw (M4 x 0.7)
29	AM1519 Gun Plug Nut
30	AM5098 Water-Cooled Plug Body Assembly
31	AMLOR Liner 'O' Ring

Part Number	Description
32	AM1826 Liner Retaining Nut
33	AMWS Wear Parts Spanner
34	M6WN-DT Nozzle Ring Disassembly Tool

## Retrofit Handle Option

Part Number	Description
13	AMP2515 Pistol Handle Assembly

## Cable Parts

Description	Part Number			
	3mt	4mt	5mt	
4	Water Inlet Hose Assembly	AM5012-30	AM5012-40	AM5012-50
5	Outer Liner Assembly	AM6008-30	AM6008-40	AM6008-50
6	Power Cable Assembly	AM6015-30	AM6015-40	AM6015-50
7	Switch Lead Assembly	AM5010-30	AM5010-40	AM5010-50
9	Canvas Cover Assembly	AM5019-30	AM5019-40	AM5019-50
12	Complete Cable Assembly	AM6006-30	AM6006-40	AM6006-50